

Seneca St. Commercial Property

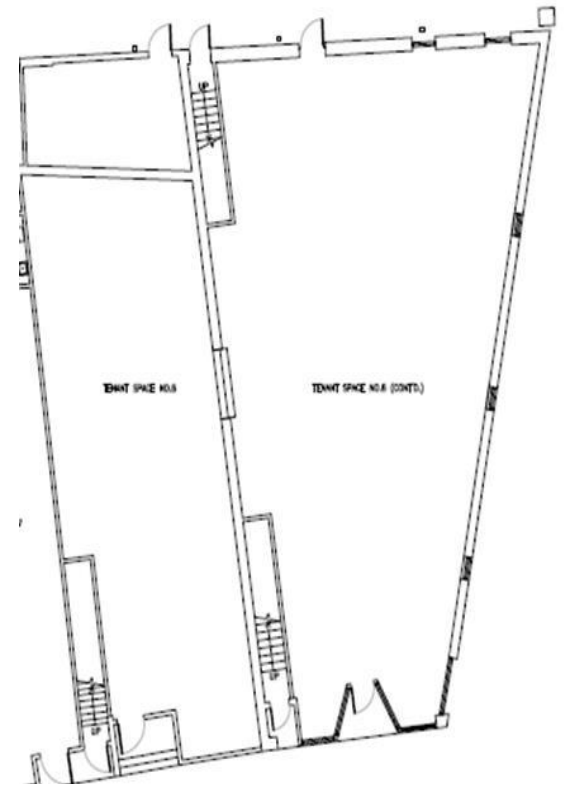
FACT SHEET

Location

- △ Building is located one block North of Main Street and the Central Business District Center. NYS Routes 21 and 36 extend north and south through the City of Hornell and a 4 lane highway connecting Interstate 86 just two miles north of the city. Regional and Commercial development is along this route.

Including

- △ Public parking front and back
- △ 4 Entrances
- △ Front Display Windows
- △ Total Sq Ft 4070
- △ Will Consider subdividing
- △ Carpet flooring, drop ceilings, florescent lighting and drywall partitions
- △ Bathroom
- △ Stairway to basement level for additional storage
- △ Handicap Accessible
- △ Minimum lease One Year
- △ Reduced rent with extended leases



More Information:
 △ Contact **BOO**
BOO\$25

